



NEW  LEAF

**JUSTICE ENTERPRISES**

**A SOCIAL ENTERPRISE DIVISION OF THE  
SURVIVOR ADVOCACY OUTREACH PROGRAM**



## Who is SAOP?

Why: We believe that everyone deserves a life free of relational violence

How: We do this in our communities by educating about sexual trauma/healthy relationships to empower choice and enact change

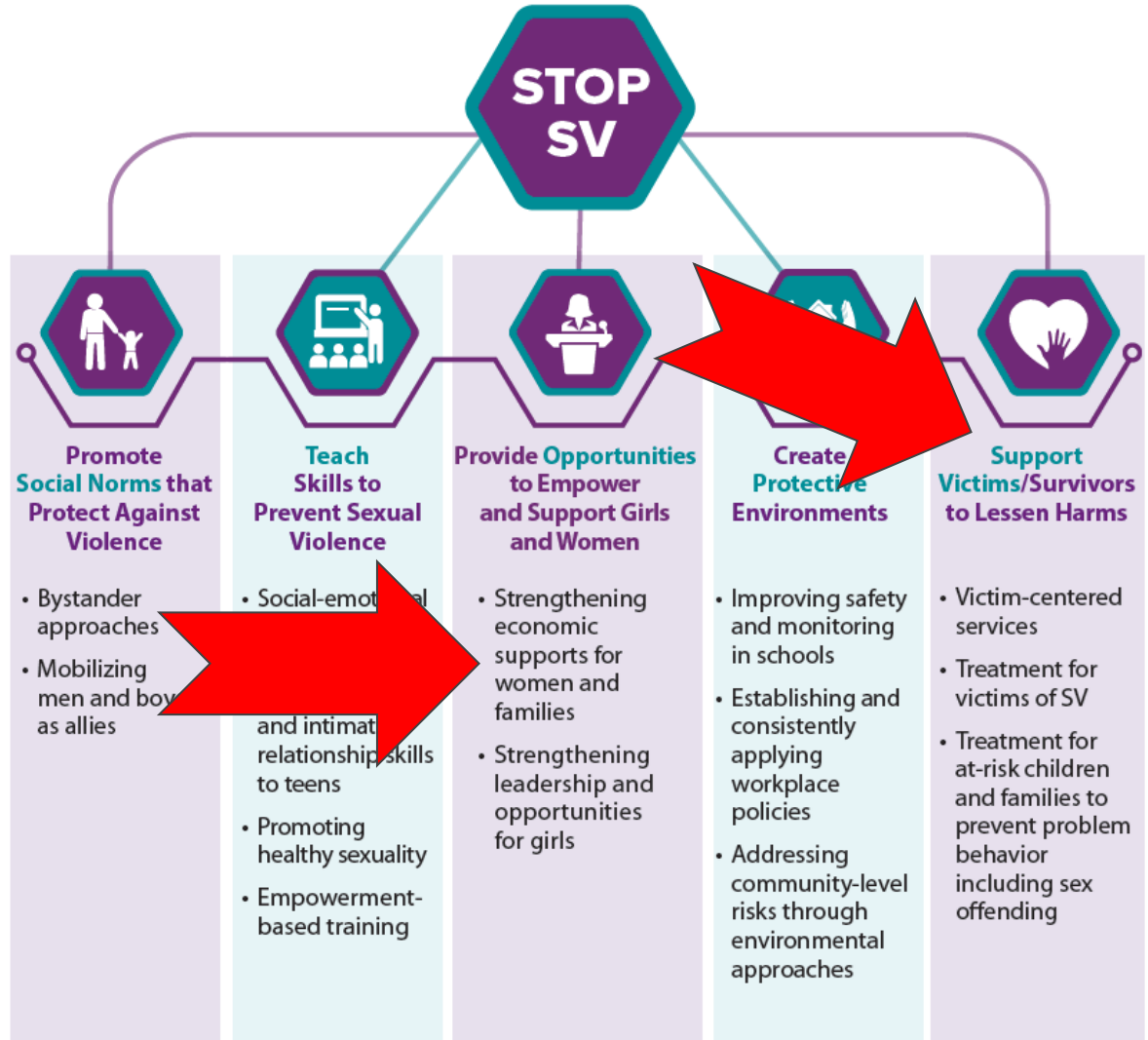
What: Rape Crisis Center, Domestic Violence Program, and Social Enterprise

*An organization dedicated to the prevention of and response to sexual assault, domestic violence, human trafficking and stalking in the Southeast, Ohio region.*



**SURVIVOR ADVOCACY  
OUTREACH PROGRAM**

# Strategies to Prevent Sexual Violence



# Strategies to Prevent Domestic Violence



## Teach safe and healthy relationship skills

- Social-emotional learning programs for youth
- Healthy relationship programs for couples



## Engage Influential adults and peers

- Men and boys as allies in prevention
- Bystander empowerment and education
- Family-based programs



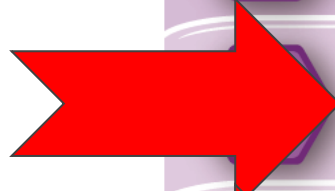
## Disrupt the developmental pathways toward partner violence

- Early childhood home visitation
- Preschool enrichment with family engagement
- Parenting skill and family relationship programs
- Treatment for at-risk children, youth, and families



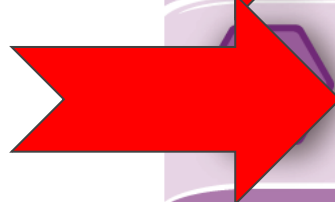
## Create protective environments

- Improve school climate and safety
- Improve organizational policies and workplace climate
- Modify the physical and social environments of neighborhoods



## Strengthen economic supports for families

- Strengthen household financial security
- Strengthen work-family supports



## Support survivors to increase safety and lessen harms

- Victim-centered services
- Housing programs
- First responder and civil legal protections
- Patient-centered approaches
- Treatment and support for survivors of IPV, including teen dating violence

# Strategies to Prevent Adverse Childhood Experiences



## Strengthen economic supports to families

- Strengthening household financial security
- Family-friendly work policies



## Change social norms to support parents and positive parenting

- Public engagement and enhancement campaigns
- Legislative approaches to reduce corporal punishment



## Provide quality care and education early in life

- Preschool enrichment with family engagement
- Improved quality of child care through licensing and accreditation



## Enhance parenting skills to promote healthy child development

- Early childhood home visitation
- Parenting skill and family relationship approaches

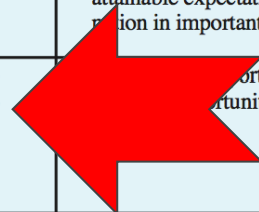


## Intervene to lessen harms and prevent future risk

- Enhanced primary care
- Behavioral parent training programs
- Treatment to lessen harms of abuse and neglect exposure
- Treatment to prevent problem behavior and later involvement in violence

**Table 1: Risk and Protective Factors for Substance Use Disorders**

Level	Risk Factors	Protective Factors
Individuals	Genetic predisposition (positive family history), psychiatric disorders, low perception of risk of substance use, impulsiveness, hostility, rebelliousness, deficits in social skills, aggression, alienation	Strong social skills, caring and cooperative nature, positive sense of self, problem-solving skills, sense of humor, autonomy, sense of purpose, religiosity or spirituality, skills to resist negative influences by peers
Family	Families with abuse or excessive conflict, families with interpersonal distance or low support, poor cooperative problem-solving, positive attitudes toward substance use	Positive bonding, lack of severe criticism, trust, mutual and reasonably high expectations, clear rules, mutual involvement in activities, involvement in religious or spiritual groups
Peer Group	Involvement with other individuals who use alcohol and drugs or engage in other risky behaviors	Involvement in activities not involving substance use, good communication and support among peers
Work/School	A negative climate, low or overly high expectations of employees/students	A caring and supportive climate, appropriately high and attainable expectations, clear standards and rules, participation in important tasks and decisions
Communities	Norms, customs and policies that permit or promote substance use, extreme economic deprivation, disorganization, alienation of individuals from their cultures, pro-use messages in the media and advertising	Supportive climate, high expectations for citizenship, opportunities for participation
Society	Availability of substances, poor economic conditions, unemployment, discrimination and marginalization	Counter-advertising messages, enforcement of relevant laws, restricted availability of and access to substances



# Social Determinants of Work



**Job Flexibility**



**Healthcare**



**Childcare**



**Transportation**



**Sustained Education**



**Home and  
Community Health**

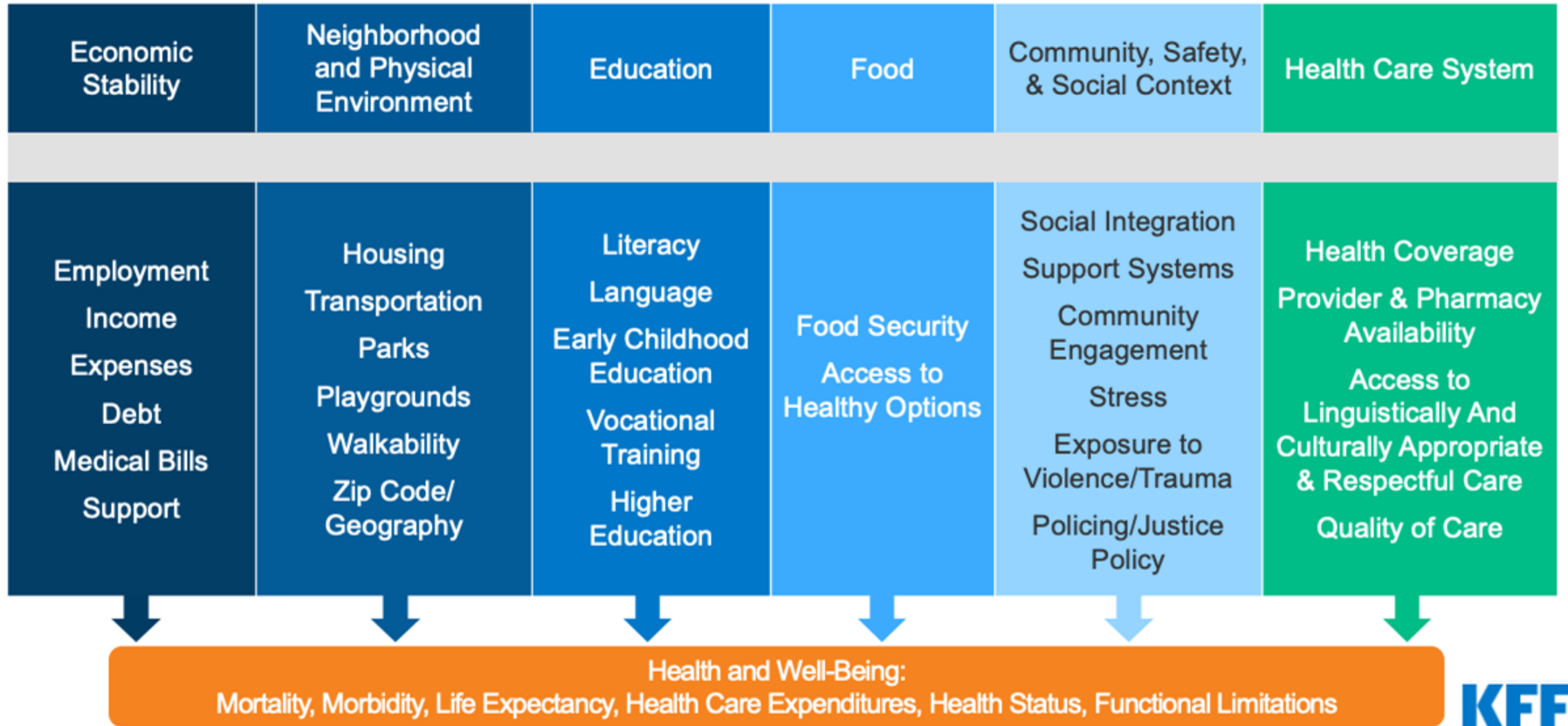


**Broadband Access**



**Access to Justice**

# Social Determinants of Health







## **2 Years of Living Wage Employment**

- Trauma Informed Work Environment
- Soft Skills Development
- Bonus Savings Structure



## **Workforce Development Training**

- 22--Month Program
- Individualized goals and education plans



## **6 Month Financial Wellness Program**

- Behavioral Financial Analysis
- Group and Individual Sessions

# **Workforce Development Program**

# SUPPORTIVE SERVICES



## Transportation



New Leaf staff provide transportation for various needs



## Housing



2 years of free housing including paid utilities, cleaning supplies, and internet



## Individualized Case Management



Participants create Individual Service Plans and work towards their self-identified goals



## Mental Health Treatment



A licensed psychologist on staff provides therapeutic services



## Referrals & Support



Childcare, recovery services, and access to benefits

# PROGRAM PARTICIPANT SUCCESSES

## SOCIAL DETERMINANTS OF HEALTH





**WHAT'S  
NEXT?**

# Appalachian Community Grant

New Leaf approach uses health, wealth, and technology as medicine to transform our communities, realize technological and economic justice for marginalized folks, and tell a new story of Appalachian Ohio. This new story solidifies Appalachian Ohio's role in the emerging tech-based Ohio economy while addressing the legacy of extractive technologies/economic practices and amplifying the hard-earned dignity, grit, and pride of the Appalachian people.



**Appalachian Community Grant Program**  
Turning Over a New Leaf for Appalachia  
Families Through Wealth, Health, and Technology

*Survivor Advocacy  
Outreach Program*

**Grant: \$25,793,806**

- Athens
- Gallia
- Meigs

 **MIKE DEWINE**  
GOVERNOR OF OHIO

 **JON HUSTED**  
Lt. GOVERNOR OF OHIO

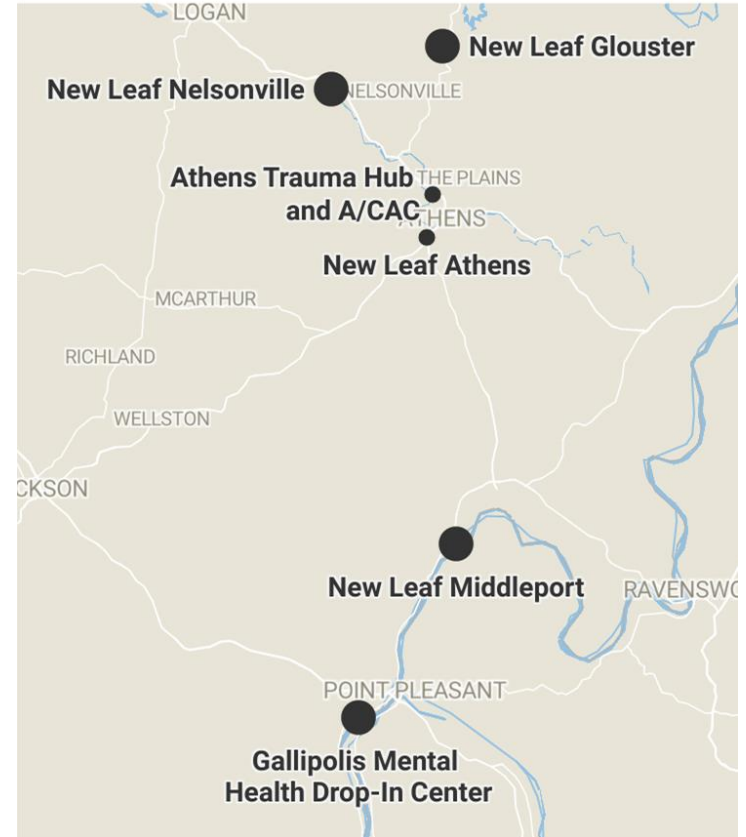
 **Ohio** | Department of Development

The graphic features a map of Ohio with the counties of Athens, Gallia, and Meigs highlighted in orange. A dark banner across the map displays the grant amount. The background is a dark red color.



# Appalachian Community Grant

- 1. Health As Medicine: Transforming Mental Health & Trauma Services**
  - a. Establish a Trauma Telehealth Hub and Adult/Child Advocacy Center (Athens)
  - b. Establish a Mental Health Drop-in Center (Gallipolis)
- 2. Wealth As Medicine: Transforming Workforce Development**
  - a. Build/Complete Four Holistic New Leaf Recovery Villages (Glouster, Nelsonville, Middleport, and Athens)
- 3. Technology as Medicine: Transforming Affordable Housing and Construction**
  - a. Develop a Vertical Alternative Building Material Supply Chain (Athens)
  - b. Establish a Trauma-Informed Property & Construction Management Social Enterprise (All)
  - c. Establish Two Affordable 3D Housing Construction Social Enterprises w/ Workforce Development Programs (based in SE Ohio but serving all Appalachian Ohio counties)



## Project Partner Organizations



OHIO  
UNIVERSITY  
Russ College of  
Engineering and  
Technology



NEW LEAF  
JUSTICE ENTERPRISES



CAPSTONE  
PROPERTY MANAGEMENT

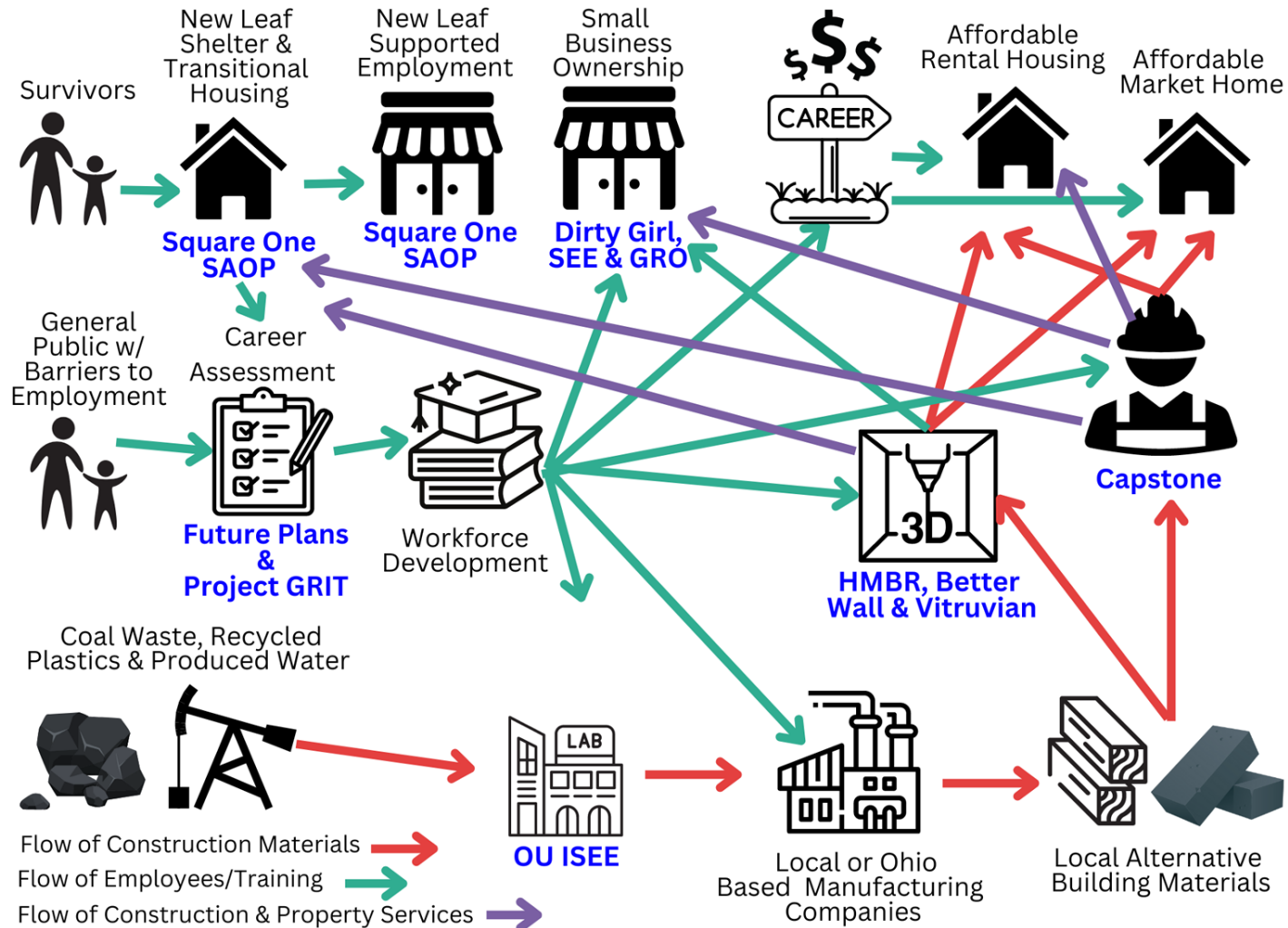
VITRUVIAN



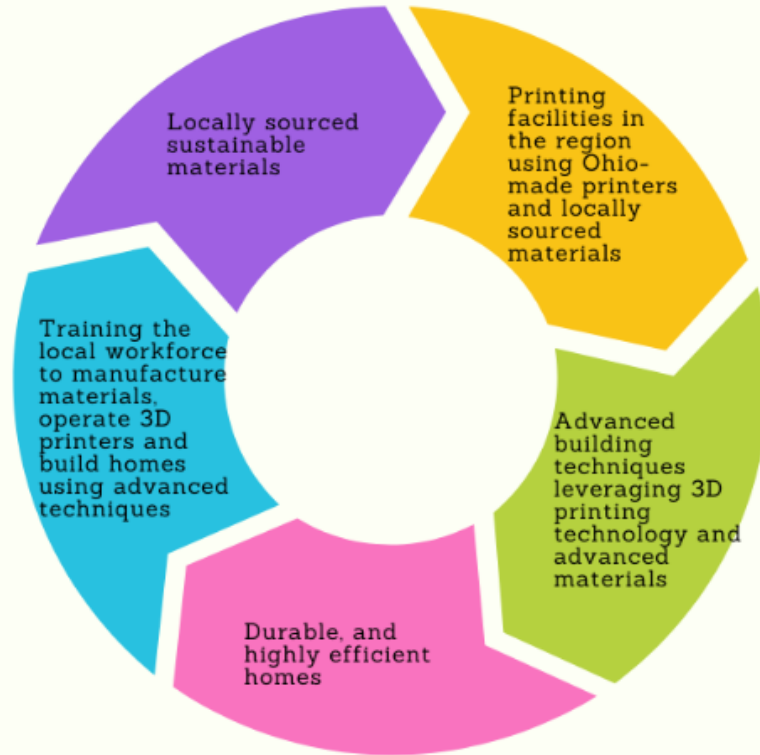
HOUSES  
MADE BY  
ROBOTS







# Southeastern Ohio Impact



**MORE**

**COMING SOON**