



Best Practices: CDBG Micro Enterprise

Support. Fund. Grow. Small Business is a big deal in Montgomery County, Ohio. In 2016, Montgomery County and the Cities of Dayton and Kettering partnered with multiple local small business



PROJECT BACKGROUND:

Small business is the lifeblood of Montgomery County, and communities across Ohio. The Micro Enterprise Grant Program was developed to help small, for-profit companies in Montgomery County grow their business through grants from \$2,500 to \$25,000. The program is targeted to businesses with five (5) or fewer employees and \$500,000 or less in sales. With an emphasis on socially and economically disadvantaged businesses, we deliver working capital to help these companies succeed and grow.

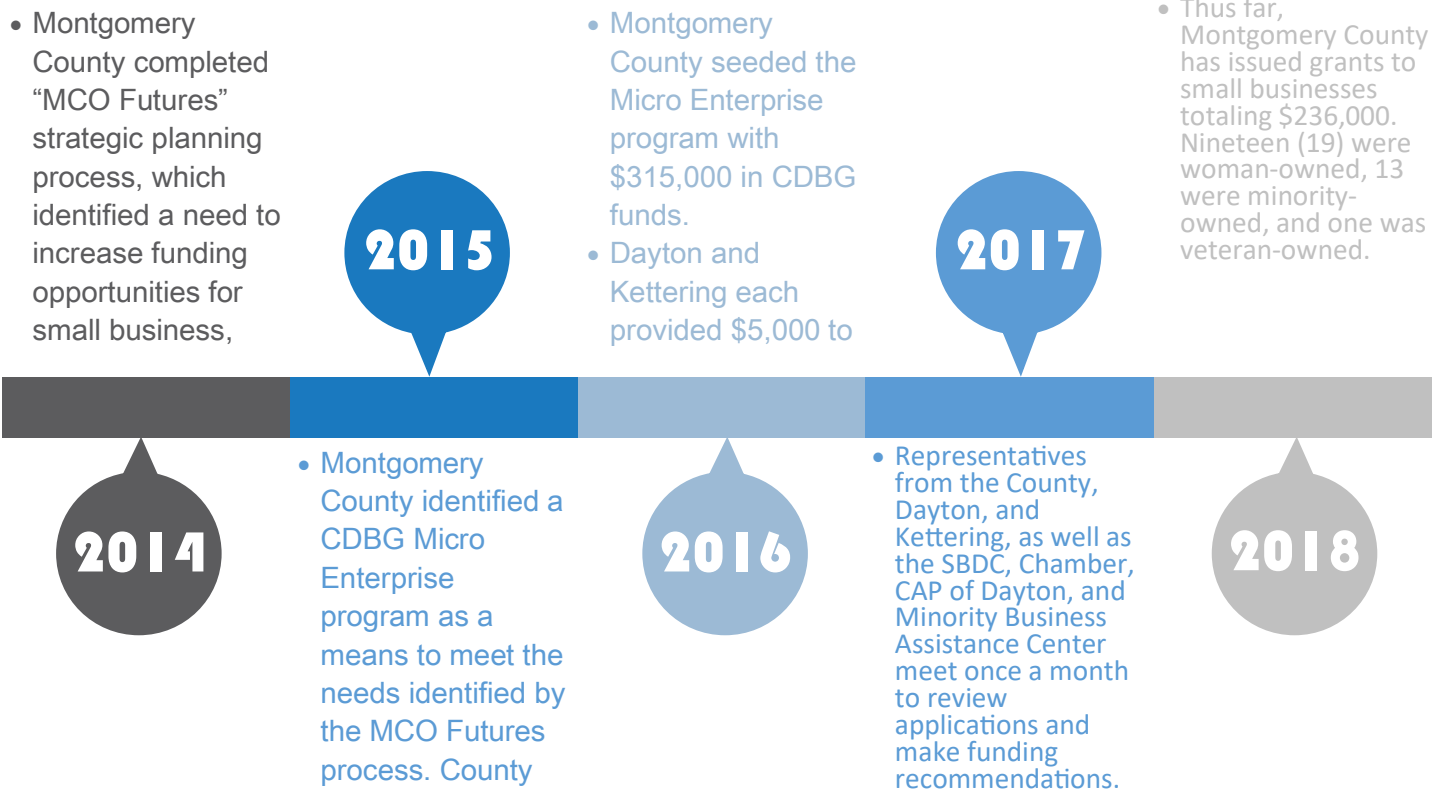
Project Partners:

Working with existing resources for small business, like the network of Small Business Development Centers (SBDC), the Dayton Area Chamber of Commerce, and the Dayton Minority Business Assistance Center, Montgomery County created a program that fills a need for working capital. The Cities of Dayton and Kettering also contributed funding to increase the program's capacity. Community Action Partnership (CAP) of Dayton, which had a history of providing entrepreneurship and business

FUNDING SOURCES:

- Montgomery County provided the bulk of the initial infusion of \$315,000 in **CDBG** funds.
- The Cities of Kettering and Dayton each contributed \$5,000 in CDBG, allowing businesses throughout the county to have access to the Micro Enterprise Funds.
- Community Action Partnership (CAP) of Dayton was able to leverage \$20,000 in additional grant funds from the Ohio Community Development Corporation Association to provide training and technical assistance.
- Businesses contribute a minimum 10% cash equity match to their projects.

PROJECT IMPLEMENTATION TIMELINE:



ELIGIBILITY & APPLICABILITY

- Community Development Block Grant (CDBG) program allows for MicroEnterprise assistance under Section 105(a) of the Housing and Community Development Act of 1974.
- Section 807(c) defines a Microenterprise as a commercial business with 5 or fewer employees, 1 or more of whom are owners.
- Montgomery County collects income self-certification documentation from businesses and employees assisted through the Microenterprise program. This documents low- and moderate-income (LMI) status of persons employed by CDBG-assisted job creation activities.



Twist Cupcakery, in Dayton, received a

