



MORE COTA, MORE SIDEWALKS, MORE OPPORTUNIT Y

Ohio Conference of
Community Development
October 24, 2024

COTA

Franklin County
BOARD OF
COMMISSIONERS

MID-OHIO REGIONAL
MORPC
PLANNING COMMISSION

THE CITY OF
COLUMBUS
ANDREW J. GINTHER, MAYOR

COLUMBUS
PARTNERSHIP



Link Us
Moving our region. Together.



KENNETH GANTER

Service Planner
COTA

JONATHAN MILLER

Principal Planner
MORPC

RORY MCGUINNESS

*Deputy Director, Public
Service*
City of Columbus





MORE COTA

COTA



THE CITY OF
COLUMBUS
ANDREW J. GINTHER, MAYOR

COLUMBUS
PARTNERSHIP



Link Us
Moving our region. Together.

WHO WILL BENEFIT FROM COTA'S PLAN?

**THE COTA SERVICE AREA
WILL HAVE EXPANDED
TRANSIT AND NEW
SIDEWALKS, BIKEWAYS, AND
TRAILS.**

Franklin County and Portions of:

Delaware, Fairfield, Licking and Union Counties

17 Cities:

Bexley, Canal Winchester, Columbus, Dublin, Gahanna, Grandview Heights, Grove City, Groveport, Hilliard, New Albany, Obetz, Pickerington, Reynoldsburg, Upper Arlington, Westerville, Whitehall, and Worthington

8 Villages:

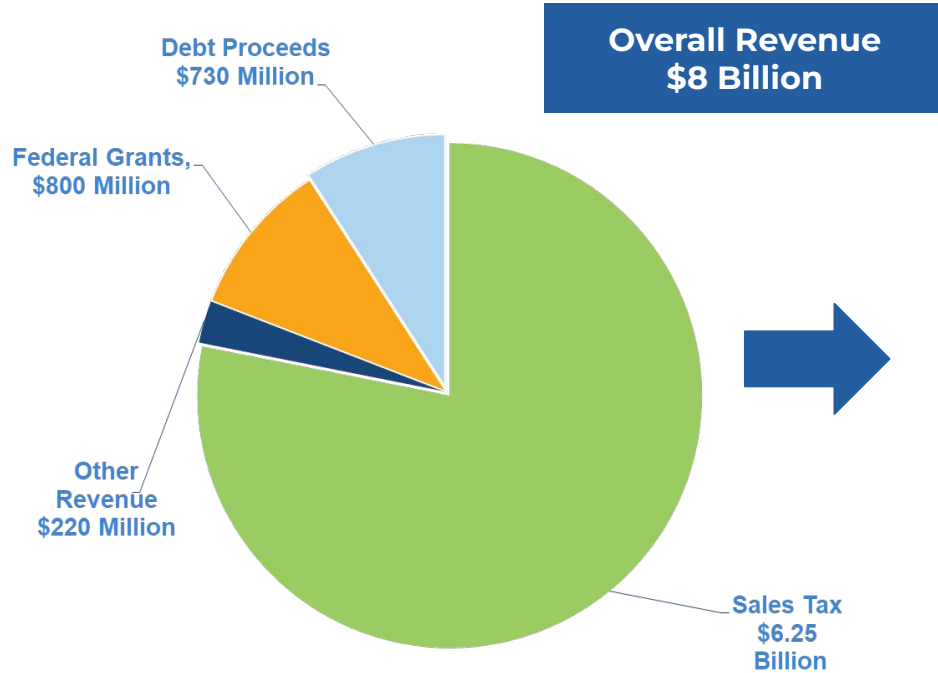
Brice, Harrisburg, Lockbourne, Marble Cliff, Minerva Park, Riverlea, Urbancrest, and Valleyview

17 Townships:

Blendon, Brown, Clinton, Franklin, Hamilton, Jackson, Jefferson, Madison, Marion, Mifflin, Norwich, Perry, Plain, Pleasant, Prairie, Sharon, Truro, and Washington



INVESTMENTS



Assumes adding a new
0.5% COTA sales tax to the existing
0.5% COTA sales tax
(November 2024)

= 1% continuing COTA sales tax

Consistent with investment levels
in other regions

Leveraged to secure at least **\$800 million**
in federal funding

~\$2 billion by 2030 and \$8 billion in new
revenue by 2050

BY 2030:



3

Rapid Transit
Corridors:
West Broad,
East Main and
Northwest

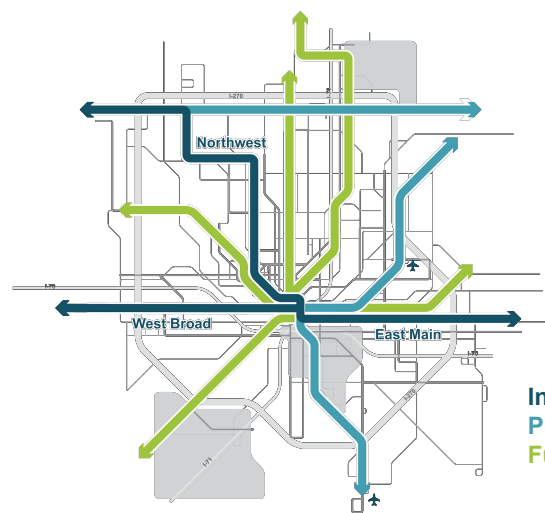
83

Community and
neighborhood
projects

150

New Miles
of Sidewalks,
Bikeways
and Trails

2050 REGIONAL TRANSIT VISION



In Progress
Planned for Near-term Study
Future Study

EXISTING

Transit Service



8 New
COTA//Plus
Zones



14

New or
Improved
Transit Lines



5

Rapid
Transit Lines



45%

More
Service

BENEFITS OF RAPID TRANSIT



WEST BROAD CORRIDOR

ACTIVITY CENTERS / TRIP GENERATORS

West Broad Street Bus Rapid Transit Corridor

- 17 BRT Stations
- BRT Station ½-Mile Area
- ▤ Mixed Flow Guideway
- ▬ Dedicated Guideway

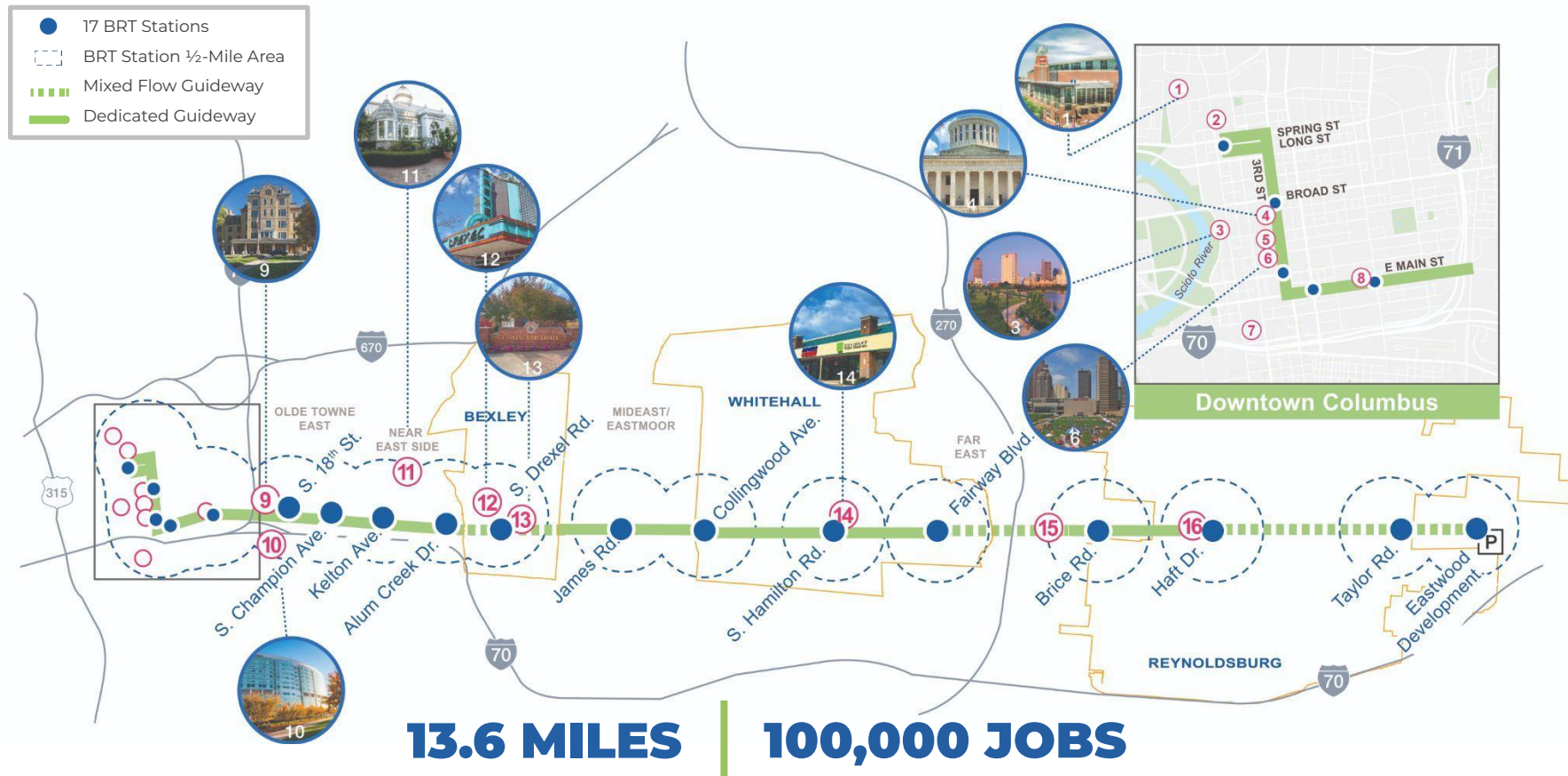


9.3 MILES

85,000 JOBS

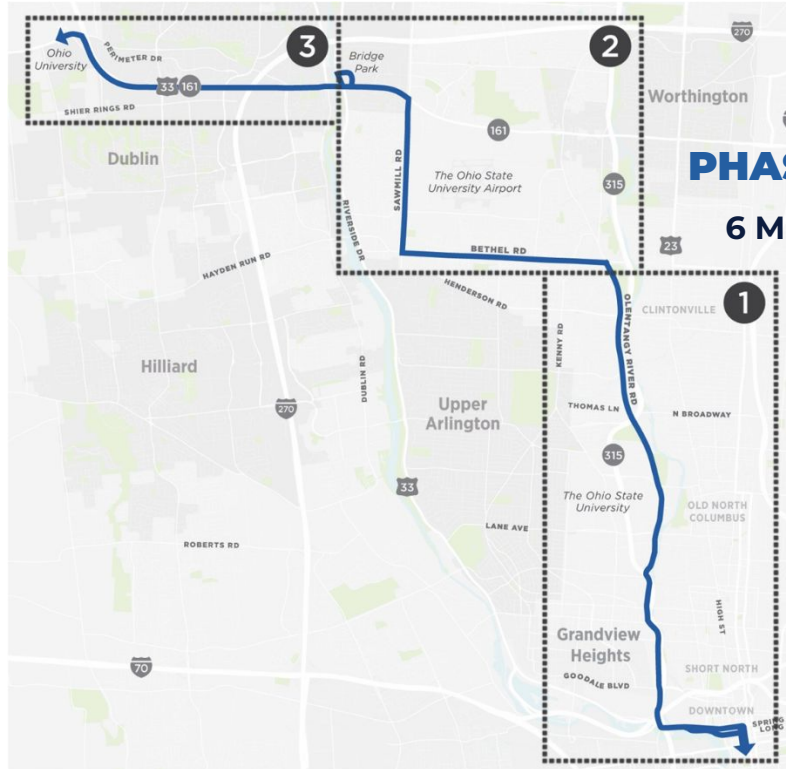
EAST MAIN CORRIDOR

ACTIVITY CENTERS / TRIP GENERATORS



NORTHWEST BRT CORRIDOR

PHASE 3
4.6 MILES



PHASE 2
6 MILES

PHASE 1

8.5 MILES

\$188 MILLION

30% OF ALL JOBS IN FRANKLIN COUNTY

50% POPULATION GROWTH BY 2050



MORE Bikeways, Sidewalks & Trails

COTA

Franklin County
**BOARD OF
COMMISSIONERS**

MORPC
MID-OHIO REGIONAL
PLANNING COMMISSION

THE CITY OF
COLUMBUS
ANDREW J. GINTHER, MAYOR

COLUMBUS
PARTNERSHIP



Link Us
Moving our region. Together.

MORE COTA

MORE SIDEWALKS

MORE OPPORTUNITY



MOVING OUR REGION FORWARD, TOGETHER

- **Faster, more reliable public transportation**

45% more service hours

Creating walkable communities with more access to work, healthcare, home and entertainment

- **Safer and expanded sidewalks, bikeways and trails**

500+ miles

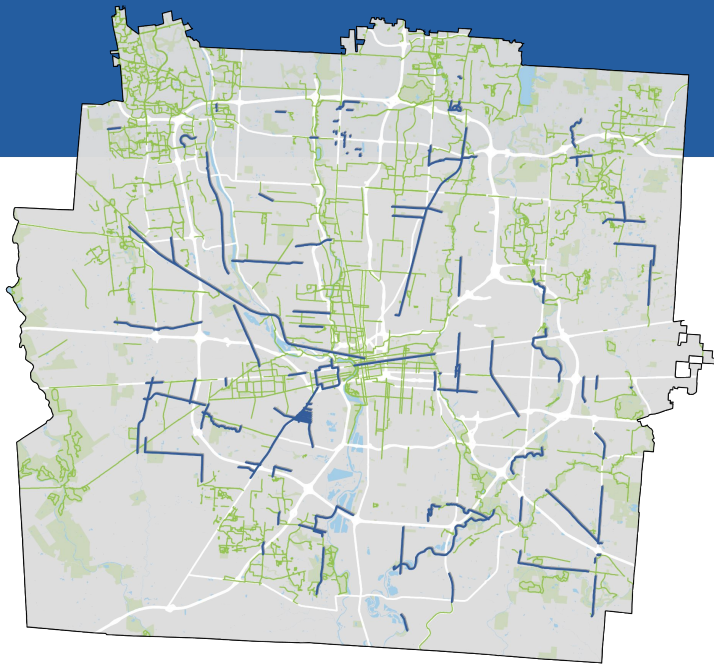
\$60 million invested annually

- **More opportunity**

Building the infrastructure to grow our economy

Support existing communities

2026-2030 TSI CAPITAL IMPROVEMENT PROGRAM



83 PROJECTS
\$262M (2024 \$)

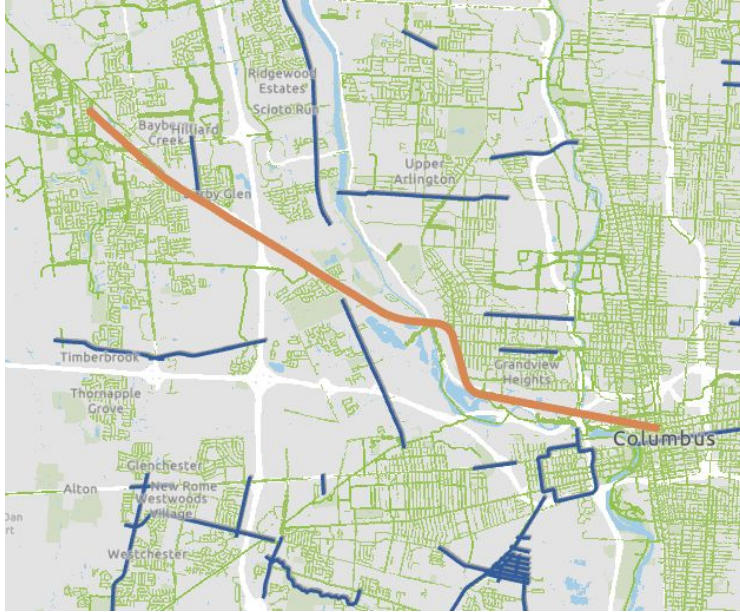
**150+ MILES OF
IMPROVEMENTS**

**55 MULTI-JURISDICTIONAL
PROJECTS**

**65 PROJECTS UNDER
CONSTRUCTION BY 2030**

35 JURISDICTIONS

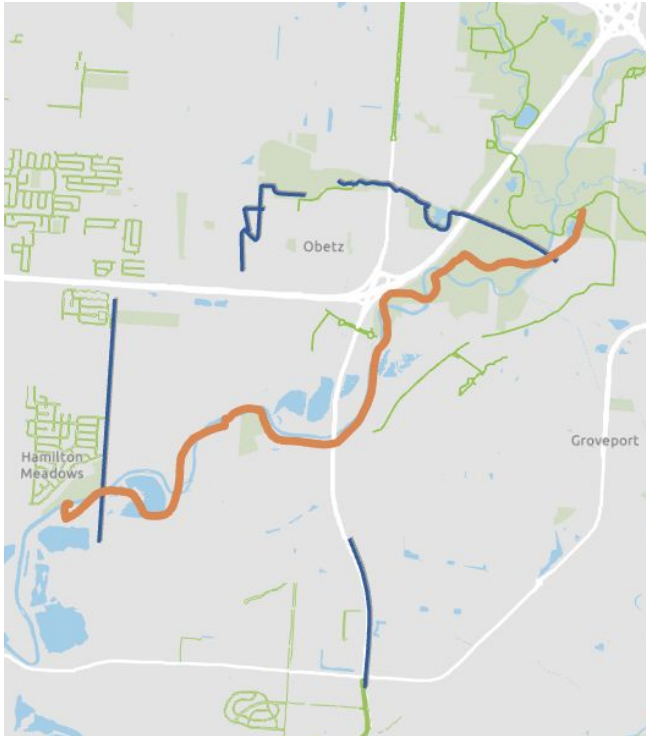
EXAMPLE PROJECT (NW): HERITAGE TRAIL EXTENSION



- Nearly ten miles of new, multi-use greenway connecting Hilliard, Columbus, Upper Arlington, Marble Cliff, Grandview Heights and terminating in the Arena District
- Will bring expanded access to other greenways (Olentangy, Scioto Trails), local parks, Quarry Trails Metro Park, jobs, retail and thousands of residents
- Potential connections to six COTA lines (Lines 3, 5, 8, 21, 32, 75)

EXAMPLE PROJECT (SE):

BIG WALNUT SOUTH BRANCH TRAIL



- More than five miles of new greenway connecting Columbus, Groveport, Obetz and Hamilton Township.
- Integrates with other planned projects connecting to planned residential developments, schools, local parks and the new Bank Run Metro Park
- Connects to COTA Line #22, an important link for the Rickenbacker area



MORE OPPORTUNITY

COTA

Franklin County
**BOARD OF
COMMISSIONERS**

MID-OHIO REGIONAL
MORPC
PLANNING COMMISSION

THE CITY OF
COLUMBUS
ANDREW J. GINTHER, MAYOR

COLUMBUS
PARTNERSHIP



Link Us
Moving our region. Together.

EQUITABLE TRANSIT-ORIENTED DEVELOPMENT (ETOD) ACTION PLAN



ETOD = Housing, jobs and services near transit to improve opportunity for all people.

Preserves existing housing, jobs, businesses and community resources.

Creates new housing, business investments, jobs and amenities.

Ensures affordable housing and access to opportunities, services and amenities for all residents.

Develops action plan to be completed this summer.

RAPID TRANSIT CASE STUDY

CLEVELAND HEALTHLINE

4.5

Number of miles on
dedicated transit guideway

\$200M

Total cost

\$9.5B+

Amount of economic development—\$190 gained for every dollar
spent on creating and launching the service

8,800

Number of residential units
built along HealthLine

13,000

Number of jobs created
along the HealthLine



RAPID TRANSIT IMPACT IN TWIN CITIES REGION SINCE 2009

\$16 billion in new development

37% of all regional development
on only 3% of land

52,000 new housing units





LinkUS NEXT STEPS

- Continuing development of community, government, non-profit and business stakeholders
- Continue corridor design and federal grants process
- **November 5** Election

STAY CONNECTED

- Visit our website at **LinkUSColumbus.com** and sign up for project updates.
- Send us an email at **info@LinkUSColumbus.com** with questions and comments.
- Follow us on social media **@LinkUSColumbus** to keep up with the latest happenings about LinkUS.
- Check out our YouTube channel **@LinkUSColumbus** for program videos and presentations.

