



NEW  LEAF

JUSTICE ENTERPRISES

A SOCIAL ENTERPRISE DIVISION OF THE
SURVIVOR ADVOCACY OUTREACH PROGRAM

Who is SAOP?

Why: We believe that everyone deserves a life free of relational violence

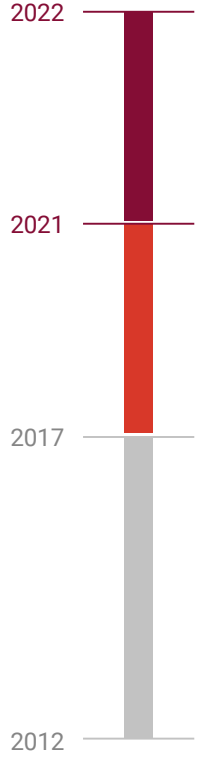
How: We do this in our communities by educating about sexual trauma/healthy relationships to empower choice and enact change

What: Rape Crisis Center, Domestic Violence Program, and Social Enterprise

An organization dedicated to the prevention of and response to sexual assault, domestic violence, human trafficking and stalking in the Southeast, Ohio region.



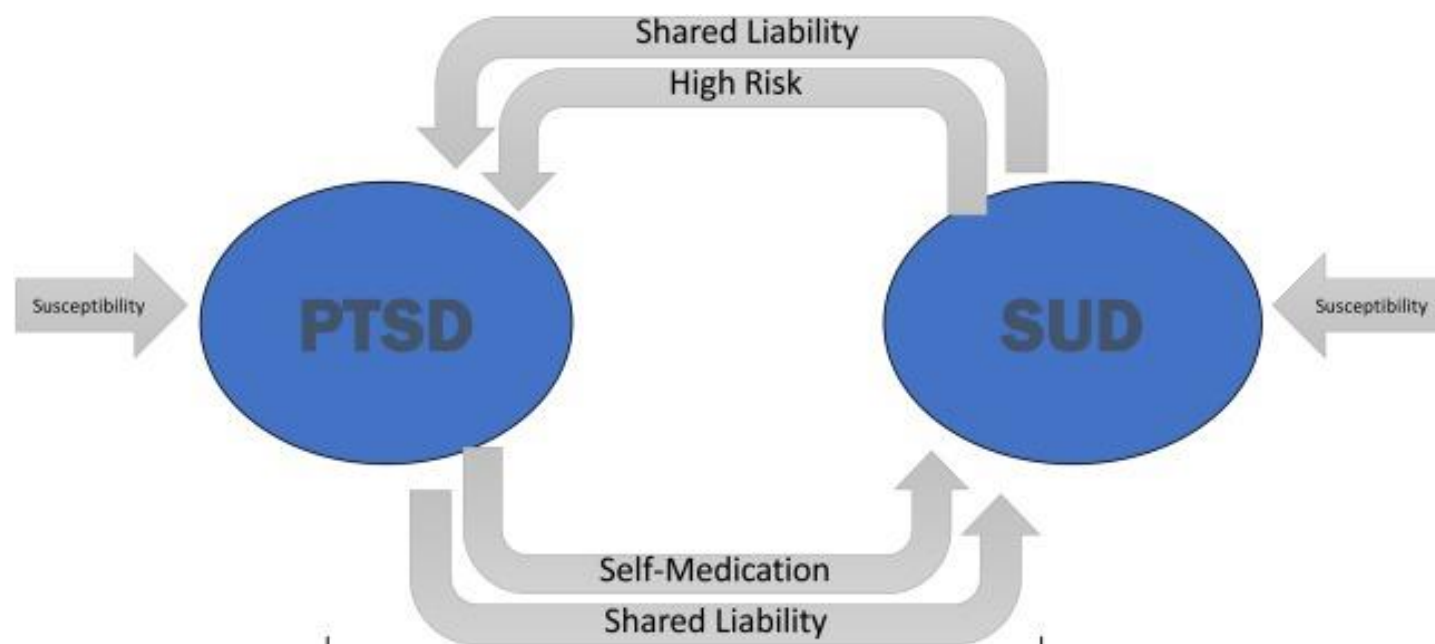
**SURVIVOR ADVOCACY
OUTREACH PROGRAM**



An iceberg floating in a blue ocean. The tip of the iceberg is above the water line, and the much larger, jagged base is submerged below the surface. The word "ADDICTION" is written in a bold, black, textured font above the water line, and the word "TRAUMA" is written in the same font below the water line, next to the submerged part of the iceberg.

ADDICTION

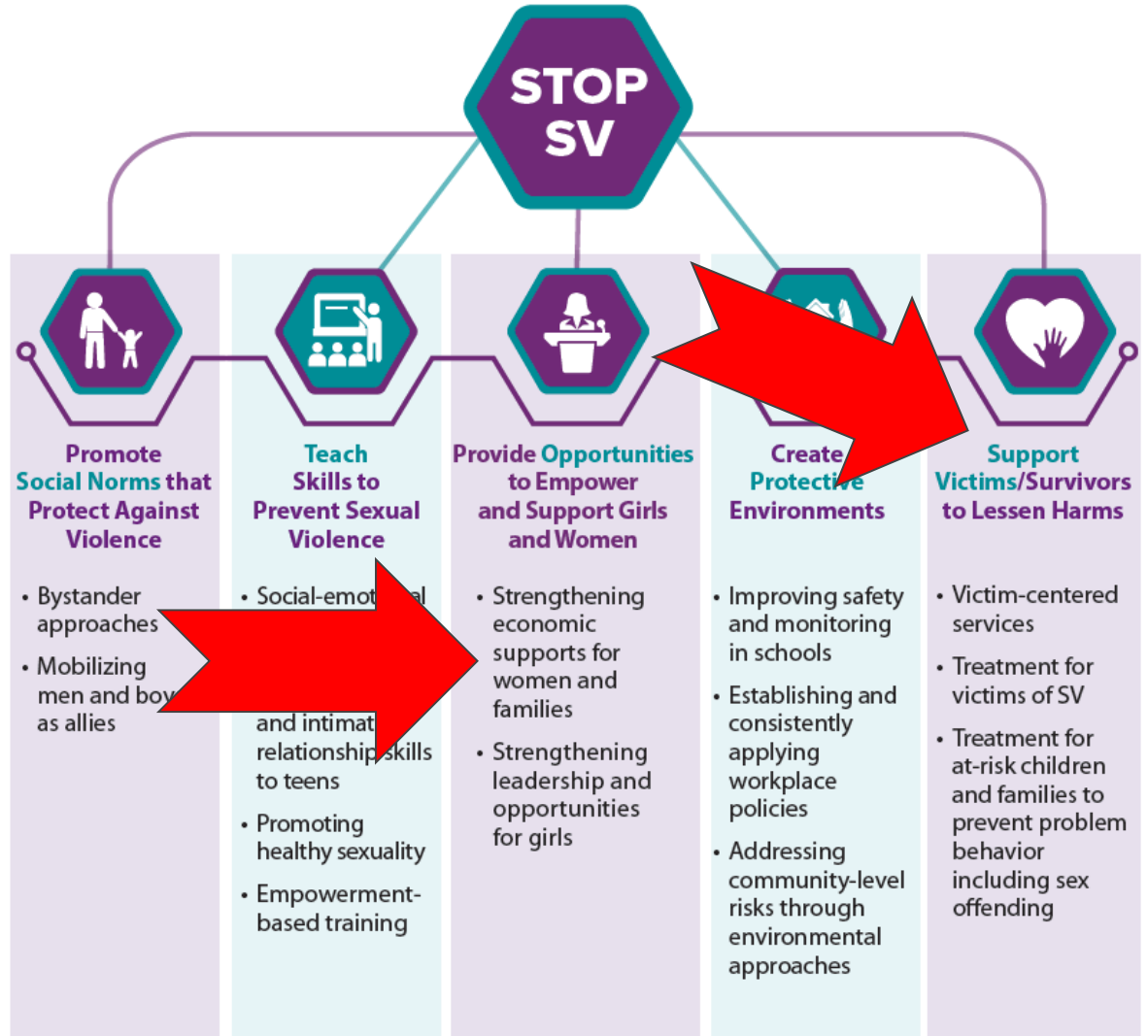
TRAUMA



Model	Description	Evidence
Self-Medication	A prior diagnosis of PTSD predicted the later findings of alcohol or drug use disorders	Khantzian, 1997; Chilcoat & Breslau, 1998; Back, Brady, Sonne, & Verduin, 2006; Hien et al., 2010
Shared Liability	A complex, reciprocal, and reinforcing relationship between traumatic stress-related disorders and SUDs	Norman, 2012; López-Castro, Hu, Papini, Ruglass, & Hien, 2015; Gilpin & Weiner, 2017;
Susceptibility	Early stress exposure leading to PTSD increases the vulnerability to develop SUDs	Kendler et al., 2000; Young-Wolff, Kendler, Ericson, & Prescott, 2011
High-Risk	Substance intoxication and/or other high risk contexts (e.g., drug related crime) lead to trauma exposure and development of PTSD	Davis, Stoner, Norris, George, & Masters, 2009; Haller & Chassin, 2014; Windle 1994



Strategies to Prevent Sexual Violence



Strategies to Prevent Domestic Violence



Teach safe and healthy relationship skills

- Social-emotional learning programs for youth
- Healthy relationship programs for couples



Engage Influential adults and peers

- Men and boys as allies in prevention
- Bystander empowerment and education
- Family-based programs



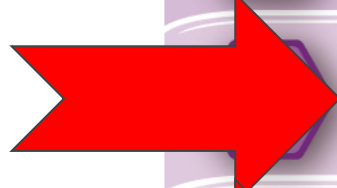
Disrupt the developmental pathways toward partner violence

- Early childhood home visitation
- Preschool enrichment with family engagement
- Parenting skill and family relationship programs
- Treatment for at-risk children, youth, and families



Create protective environments

- Improve school climate and safety
- Improve organizational policies and workplace climate
- Modify the physical and social environments of neighborhoods



Strengthen economic supports for families

- Strengthen household financial security
- Strengthen work-family supports



Support survivors to increase safety and lessen harms

- Victim-centered services
- Housing programs
- First responder and civil legal protections
- Patient-centered approaches
- Treatment and support for survivors of IPV, including teen dating violence

Strategies to Prevent Adverse Childhood Experiences



Strengthen economic supports to families

- Strengthening household financial security
- Family-friendly work policies



Change social norms to support parents and positive parenting

- Public engagement and enhancement campaigns
- Legislative approaches to reduce corporal punishment



Provide quality care and education early in life

- Preschool enrichment with family engagement
- Improved quality of child care through licensing and accreditation



Enhance parenting skills to promote healthy child development

- Early childhood home visitation
- Parenting skill and family relationship approaches

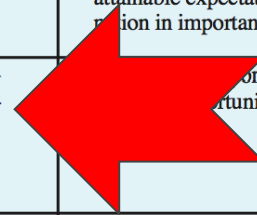


Intervene to lessen harms and prevent future risk

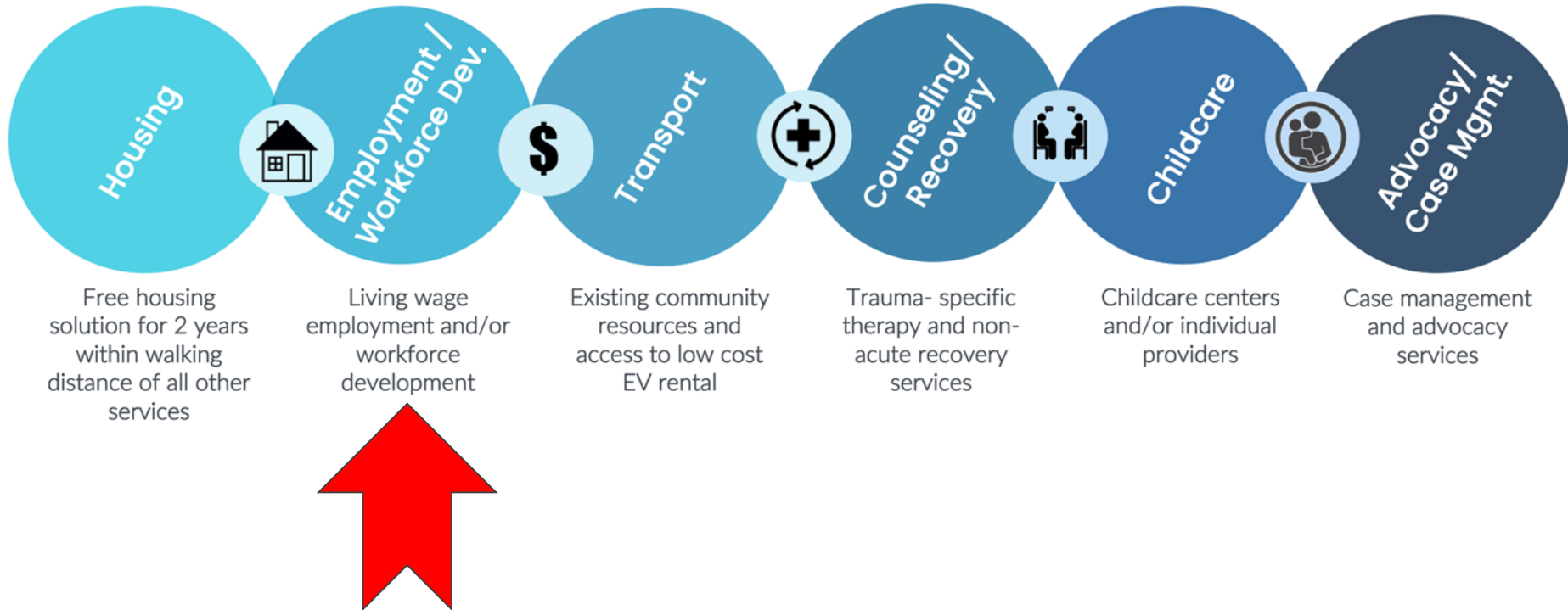
- Enhanced primary care
- Behavioral parent training programs
- Treatment to lessen harms of abuse and neglect exposure
- Treatment to prevent problem behavior and later involvement in violence

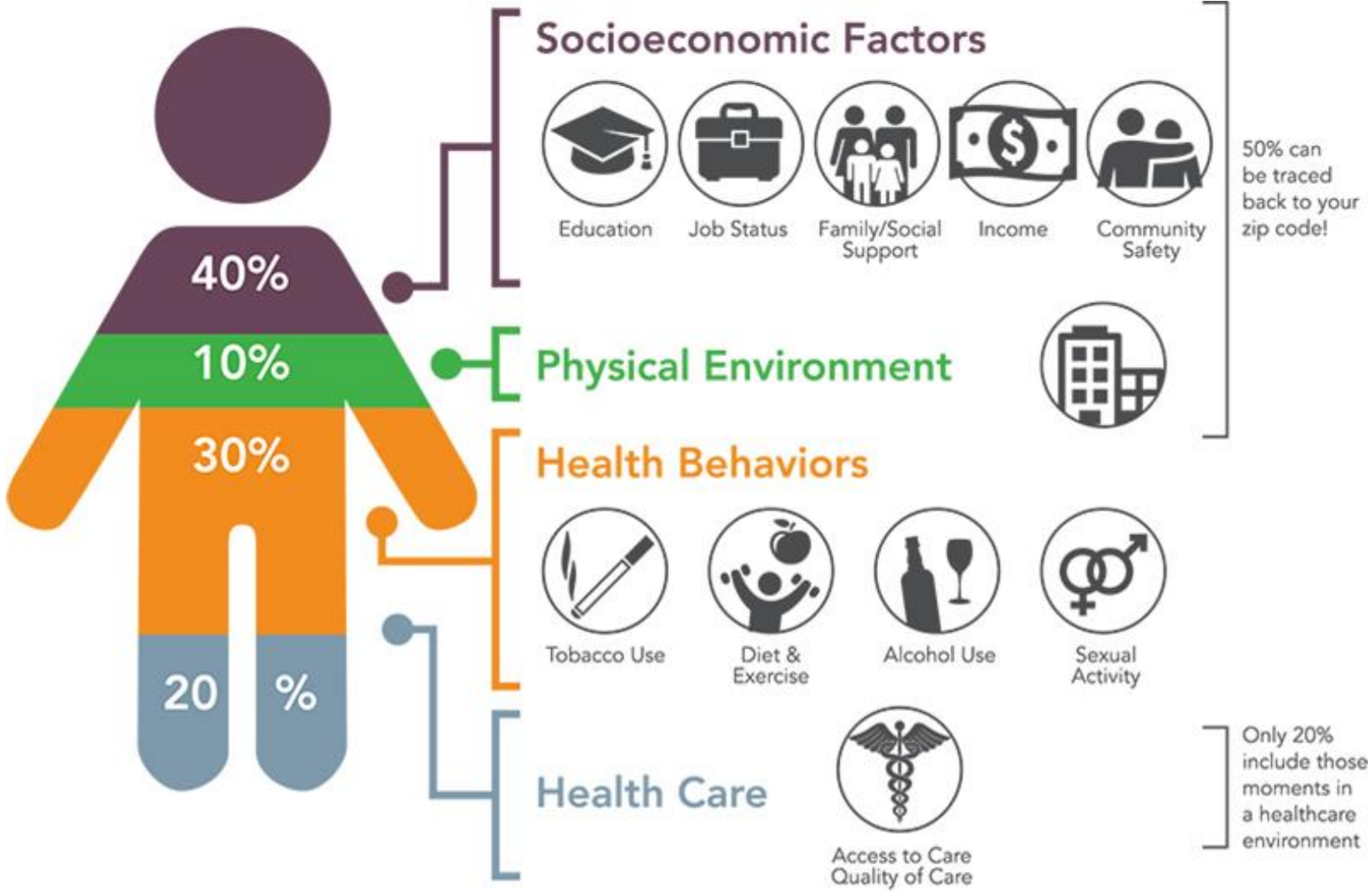
Table 1: Risk and Protective Factors for Substance Use Disorders

Level	Risk Factors	Protective Factors
Individuals	Genetic predisposition (positive family history), psychiatric disorders, low perception of risk of substance use, impulsiveness, hostility, rebelliousness, deficits in social skills, aggression, alienation	Strong social skills, caring and cooperative nature, positive sense of self, problem-solving skills, sense of humor, autonomy, sense of purpose, religiosity or spirituality, skills to resist negative influences by peers
Family	Families with abuse or excessive conflict, families with interpersonal distance or low support, poor cooperative problem-solving, positive attitudes toward substance use	Positive bonding, lack of severe criticism, trust, mutual and reasonably high expectations, clear rules, mutual involvement in activities, involvement in religious or spiritual groups
Peer Group	Involvement with other individuals who use alcohol and drugs or engage in other risky behaviors	Involvement in activities not involving substance use, good communication and support among peers
Work/School	A negative climate, low or overly high expectations of employees/students	A caring and supportive climate, appropriately high and attainable expectations, clear standards and rules, participation in important tasks and decisions
Communities	Norms, customs and policies that permit or promote substance use, extreme economic deprivation, disorganization, alienation of individuals from their cultures, pro-use messages in the media and advertising	A caring and supportive climate, high expectations for citizenship, opportunities for participation
Society	Availability of substances, poor economic conditions, unemployment, discrimination and marginalization	Counter-advertising messages, enforcement of relevant laws, restricted availability of and access to substances

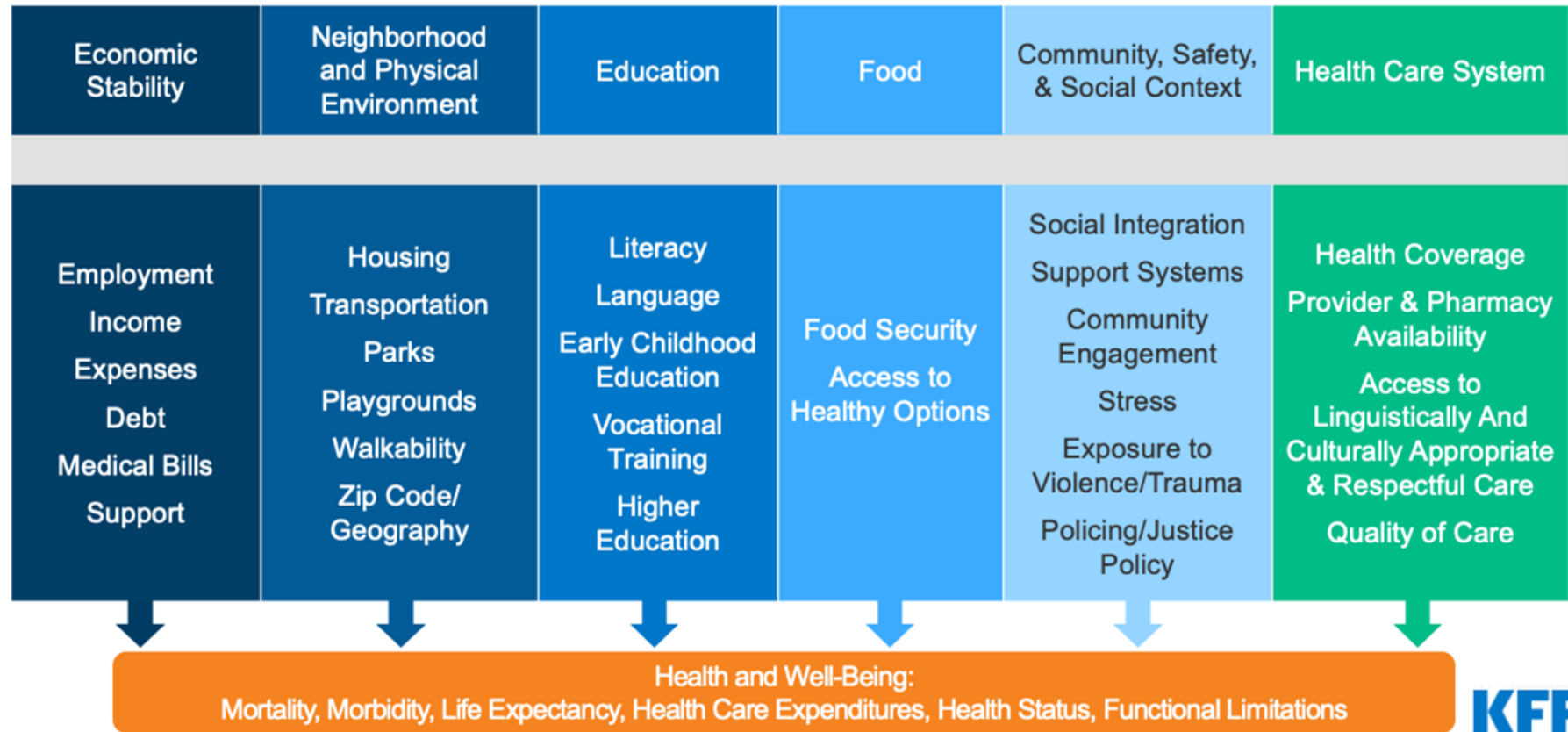


New Leaf Community Built and Social Environment

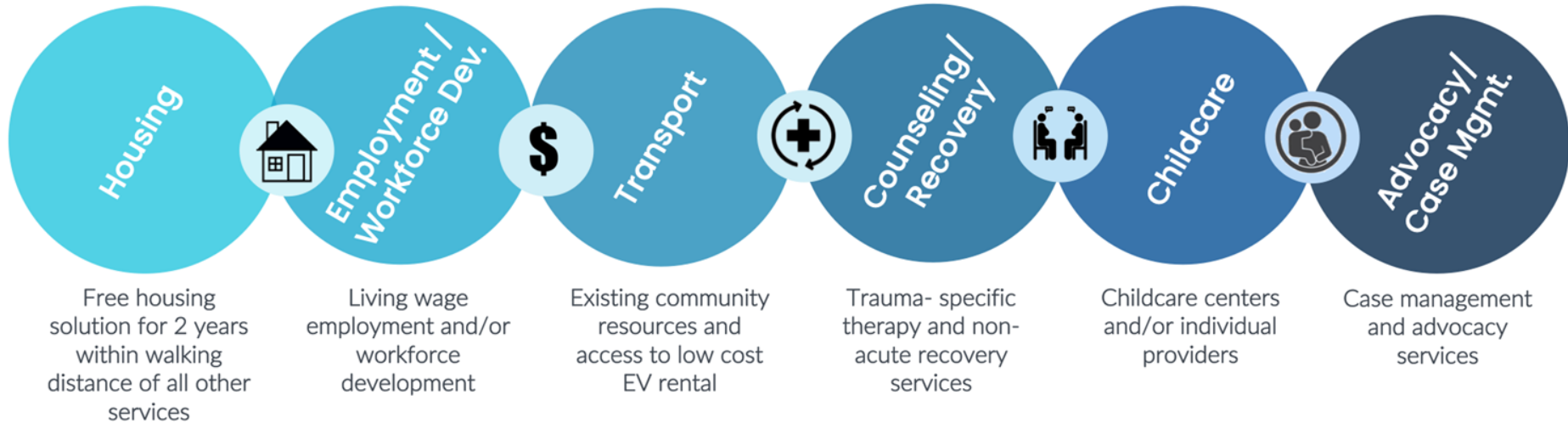




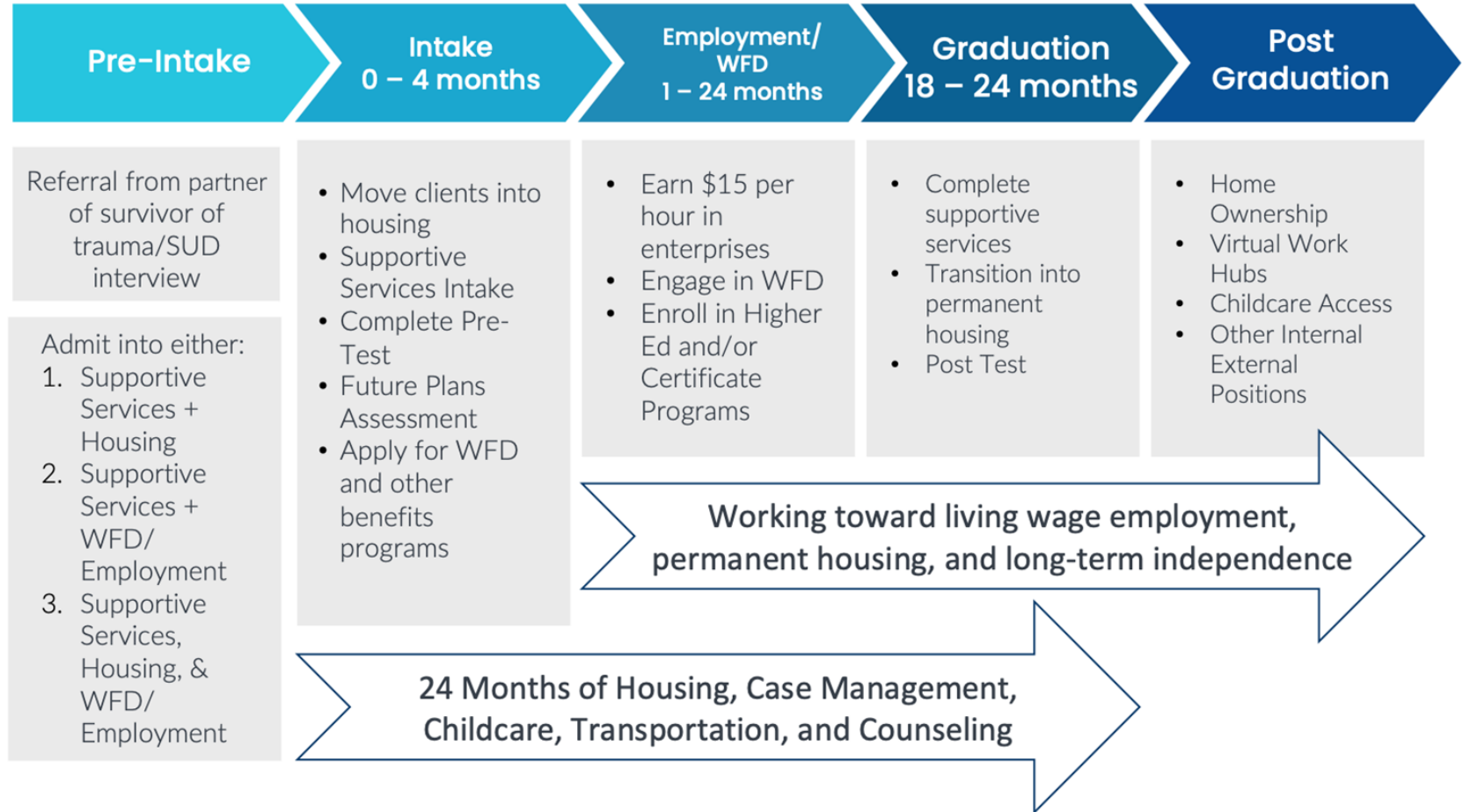
Social Determinants of Health



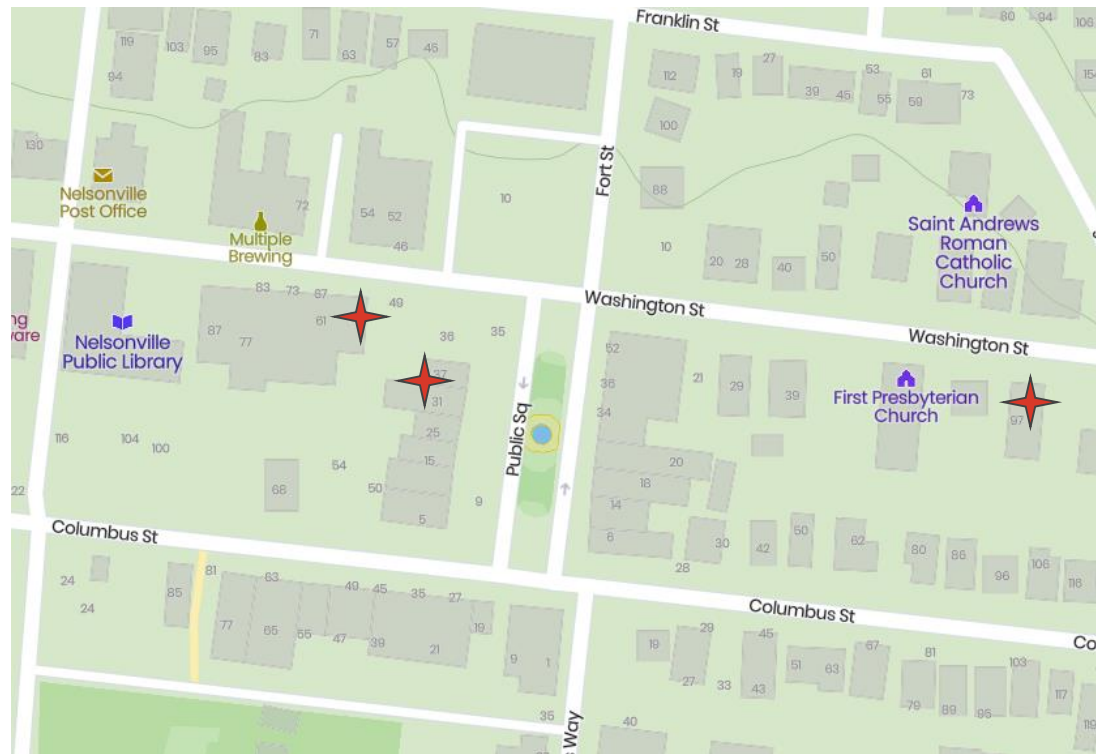
New Leaf Community Built and Social Environment



New Leaf Matriculation Process



New Leaf Meeting Space - Nelsonville



New Leaf Marketplace - Nelsonville





Crihfield Safe Haven - Youth Resiliency &
Childcare Center Nelsonville



Workforce Development Program



2-years of living
wage employment



Workforce
development
training



6-month financial
wellness program

Living Wage Employment

- Trauma-informed work environment
- Soft skills development
- Bonus savings structure



NEW LEAF
MARKETPLACE

Workforce Development Training

- 22-month program
- Creating individualized goals and education plans

6-Month Financial Wellness Program

- Behavioral financial analysis
- Group and individual sessions

Fits and Starts

The impact of living wage compensation on benefits

Developing process and infrastructure

Supportive Services

- Transportation
- Childcare
- Individual Case Management
- Recovery Services
- Referrals and support for accessing mental health treatment

Housing

- Housing First Model
- Paid utilities and cleaning supplies

Fits and Starts

Community safety being compromised

Providing support to people who are in recovery as
well as people who are not

Crisis Advocacy versus Long-term case management
through New Leaf

New Leaf Communities in Athens County x Physical Space & Staff

	Housing	Enterprise/WFD	Advocacy	Childcare	Counseling	Recovery
Nelsonville	13 Housing Units	New Leaf Marketplace Nelsonville & Production	1 Case Manager SAOP Main Office (55 W Washington St.)	New Leaf Family Center Nelsonville	2 PT trauma therapists housed at SAOP Main Office (55 W Washington)	Recovery team and meeting space housed at New Leaf Family Center Nelsonville
Glouster	6-8 Housing Units	New Leaf Marketplace Glouster	1 Case Manager housed at SAOP New Leaf Glouster	New Leaf Family Center Glouster	2 PT trauma therapists housed at New Leaf Glouster	Recovery team and meeting space housed New Leaf Glouster
Athens	6-8 Housing Units	New Leaf Marketplace Athens	1 Case Manager housed at New Leaf Athens	Childcare and admin team located at New Leaf Family Center Athens	2 PT trauma therapists housed at New Leaf Athens	Recovery team and meeting space housed New Leaf Athens

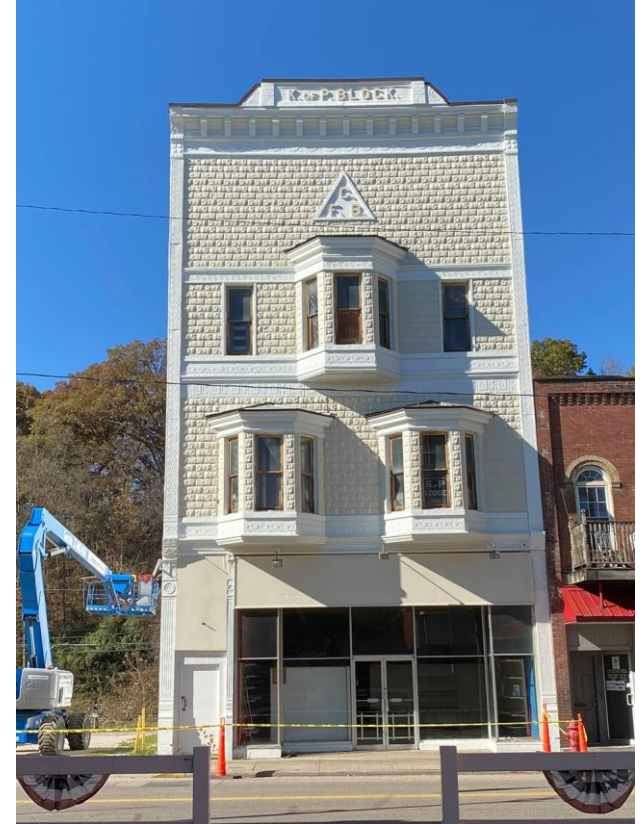
New Leaf Community Athens



New Leaf Virtual Work Hub, Childcare, and Meeting Spaces



New Leaf Virtual Work Hub, Childcare, and Meeting Spaces



New Leaf Marketplace & Housing Glouster



Current MOU & Project Partners



Women for Recovery®
Serenity Grove
WOMEN'S RECOVERY HOUSE



OHIO
UNIVERSITY

Voinovich School of
Leadership and Public Affairs



Ohio
MEANS
Jobs

Athens
County



ATHENS COUNTY
PUBLIC LIBRARIES

Athens County
Job & Family Services



HOPEWELL
HEALTH CENTERS



Athens-Hocking-Vinton
Alcohol, Drug Addiction and Mental Health Services Board

