


Ohio
Conference of
Community
Development
April 2020

Community Development Block Grant Funding and Program Strategies




Community Development Block Grant





U.S. Department of Housing and Urban Development (HUD)

Ohio Development Services Agency

Office of Community Development

Small Cities and Rural Counties

Community Development Block Grant Programs



Economic Development <ul style="list-style-type: none"> Economic Development Revolving Loan Fund 	Community Development <ul style="list-style-type: none"> Allocation Critical Infrastructure Neighborhood Revitalization 	Residential Public Infrastructure <ul style="list-style-type: none"> Water Sanitary Sewer 	Target of Opportunity <ul style="list-style-type: none"> Downtown Community Development Economic Development 	Housing <ul style="list-style-type: none"> Home Repair Rehabilitation Emergency Monthly Housing Payments
---	---	--	--	--




Economic Development Program Projects

- Include Fixed Asset Financing
- CDBG Funds Must be Repaid
- Create and/or Retain Permanent, Private Sector LMI Jobs
- Meet all other Economic Development Program Requirements

Census 2020 BE COUNTED Ohio It's easy, safe and important. CensusOhio.gov **Ohio** Development Services Agency

Critical Infrastructure Projects

- High-priority, single-purpose public facilities
- Critical or poor condition
- Primarily residential benefit

Census 2020 BE COUNTED Ohio It's easy, safe and important. CensusOhio.gov **Ohio** Development Services Agency

Target of Opportunity Projects

- Job Creation or Retention
- Community Development
- Imminent Threat
- Downtown Revitalization

Census 2020 BE COUNTED Ohio It's easy, safe and important. CensusOhio.gov **Ohio** Development Services Agency

Program Modifications

- Emergency Shelter Funding Gap Program
- Public Service Waivers/Amendments
- Housing: Emergency Monthly Housing Payments

Official of Census 2020 BE COUNTED Ohio It's easy, safe and important. CensusOhio.gov

Ohio Development Services Agency

Revolving Loan Fund Modifications

- 0% interest loans
- 6- to 12-month principal/interest deferrals
- Working capital loans

Official of Census 2020 BE COUNTED Ohio It's easy, safe and important. CensusOhio.gov

Ohio Development Services Agency

Public Services

Official of Census 2020 BE COUNTED Ohio It's easy, safe and important. CensusOhio.gov

Ohio Development Services Agency

Public Service Activities

Health Care	Child Care	Job Training	Public Safety
Senior Services	Homeless Services	Drug Abuse Counseling/ Treatment	Emergency Assistance Payments (Rent/Mortgage/ Utilities)

Official of
Census 2020
It's easy, safe and important.
CensusOhio.gov

Public Service Activities

Education	Recreation	Domestic Violence	Legal Services
Fair Housing	Homebuyer Downpayment Assistance	Energy Conservation Counseling/Testing	Transportation

Official of
Census 2020
It's easy, safe and important.
CensusOhio.gov

Eligible Costs

Labor <ul style="list-style-type: none"> Staff/contract employees required to implement service 	Equipment, Supplies, Materials <ul style="list-style-type: none"> Purchasing or lease of items required to provide service 	Facility Maintenance, Operations <ul style="list-style-type: none"> Facility operation/maintenance costs; facility houses eligible CDBG public service
---	--	--

Official of
Census 2020
It's easy, safe and important.
CensusOhio.gov

Public Service Caps

The diagram features two circles. A blue circle on the left is labeled 'PY 2018' and is connected to a light blue box containing the text 'Capped at 15%' and 'Waiver to exceed'. A green circle on the right is labeled 'PY 2019 and PY 2020' and is connected to a light green box containing the text 'No longer capped'. At the bottom left is the 'Census 2020 BE COUNTED Ohio' logo, and at the bottom right is the 'Ohio Development Services Agency' logo.

Restrictions

The diagram shows an orange box labeled 'New Service' and a grey box labeled 'Quantifiable Increase in Service Level'. Below the grey box is a bulleted list: 'Above which was provided local government or state funds during the prior grant period'. At the bottom left is the 'Census 2020 BE COUNTED Ohio' logo, and at the bottom right is the 'Ohio Development Services Agency' logo.

Other Restrictions

A red triangle on the left is labeled 'Ineligible Activities'. To its right are three grey boxes: 'Political activities', 'On-going/non-emergency payments *more than 3 consecutive months', and 'Litigation expenses against HUD'. At the bottom left is the 'Census 2020 BE COUNTED Ohio' logo, and at the bottom right is the 'Ohio Development Services Agency' logo.

Emergency Assistance

Emergency Monthly Housing Payments

- CDBG may not make income payments, defined as a *series of subsistence-type grant* payments an individual or family
- Regulations allow **emergency payments** made to the provider on behalf of an individual or family for food, clothing, housing (rent or mortgage) or utilities up to **3 consecutive months**



National Objectives

LMI Area Benefit

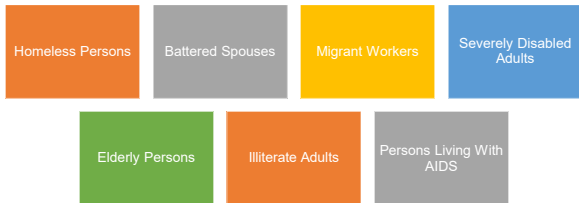
- Service available to all residents in a primarily residential area
- At least 51% of residents are LMI

Limited Clientele

- Service limited to specific group of people
 - Presumed class
 - Presumed LMI by nature/location of service
 - Income qualified LMI
- Service area not determined by geography



Limited Clientele Presumed Classes



Examples

Health Care Services

- Equipment for countywide telemedicine services at FQHC
- LMI Area Benefit; County is 51% LMI

Homeless Services

- Staff salaries/benefits, utilities for homeless shelter
- Limited Clientele; Homeless persons (presumed class)

Senior Services

- Van purchase for meal on wheels delivery
- Limited Clientele: Elderly adults (presumed class)



Examples

Transportation Services

- On-demand transit operations
- Limited Clientele: Elderly/severely disabled adults (presumed classes)

Emergency Housing Payments

- Rent/utilities payments for 3 consecutive months
- Limited Clientele; Beneficiaries must be income qualified

Other Services

- Kitchen equipment purchase, food pantry rent in LMI neighborhood
- Limited Clientele: Presumed LMI benefit due to location/nature of service



Public Facilities



Public Facilities Activities

Homeless Shelters/Domestic Violence Shelters	Public Schools/Libraries	Day Care Centers	Nursing Homes
Senior Centers	Hospitals	Fire Stations	Disaster Shelters

Official of
Census 2020
It's easy, safe and important.
CensusOhio.gov

Ohio Development
Services Agency

Restrictions

Ineligible Activities

Buildings for government conduct/political operations

Equipment, furnishings or personal property

Facility operations and maintenance

Public housing construction

Official of
Census 2020
It's easy, safe and important.
CensusOhio.gov

Ohio Development
Services Agency

National Objectives

<p>LMI Area Benefit</p> <div style="border: 1px solid #ccc; padding: 5px; margin: 5px;"> <p>Public facility used to benefit all residents in an LMI service area</p> </div>	<p>Limited Clientele</p> <div style="border: 1px solid #ccc; padding: 5px; margin: 5px;"> <p>Public facility used to benefit a limited clientele group</p> </div> <div style="border: 1px solid #ccc; padding: 5px; margin: 5px;"> <p>Service area not determined by geography</p> </div>	<p>Slum/Blight</p> <div style="border: 1px solid #ccc; padding: 5px; margin: 5px;"> <p>Area: Public facility in blighted area, project addresses blighting influences</p> </div> <div style="border: 1px solid #ccc; padding: 5px; margin: 5px;"> <p>Spot: Public facility outside blighted area, project limited to health/safety concerns</p> </div>
--	--	---

Official of
Census 2020
It's easy, safe and important.
CensusOhio.gov

Ohio Development
Services Agency

Examples

Senior Centers	<ul style="list-style-type: none"> • Boiler system installation/HVAC improvements • Limited Clientele: Elderly adults (presumed class)
Domestic Violence Shelter	<ul style="list-style-type: none"> • Security fencing/camera system installation • Limited Clientele: Battered spouses (presumed class)
Disaster Shelter	<ul style="list-style-type: none"> • Facility construction in LMI city for use during tornado or flood • LMI Area Benefit: City is 51% LMI

2020 Census BE COUNTED Ohio

It's easy, safe and important. CensusOhio.gov

CARES Act

\$2 billion Formula

\$1 billion States

\$2 billion Formula (COVID-19)

<ul style="list-style-type: none"> • State: \$27.2 million • Entitlements: \$63.6 million • April 6, 2020 	<ul style="list-style-type: none"> • State: \$35 million estimated • May 11, 2020 estimated 	<ul style="list-style-type: none"> • Funding: TBD • Rolling basis
--	---	---

2020 Census BE COUNTED Ohio

It's easy, safe and important. CensusOhio.gov

CARES Act

CDBG

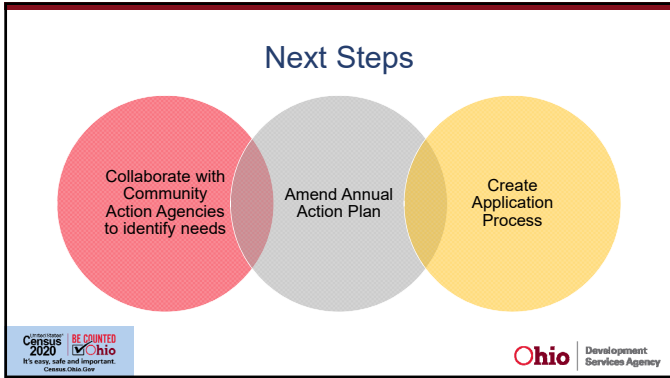
Senior Services

Homeless Services

Public Health Services

2020 Census BE COUNTED Ohio

It's easy, safe and important. CensusOhio.gov



Questions?

Mary Oakley
Mary.Oakley@development.ohio.gov

<p>Jared Jodrey</p> <p>Jared.Jodrey@development.ohio.gov</p>	<p>Ben Kepple</p> <p>Ben.Kepple@development.ohio.gov</p>	<p>Tiffany Laffitte</p> <p>Tiffany.Laffitte@development.ohio.gov</p>	<p>Haley Lupton</p> <p>Haley.Lupton@development.ohio.gov</p>	<p>Lena Osborne</p> <p>Lena.Osborne@development.ohio.gov</p>	<p>Wes Watkins</p> <p>Wesley.Watkins@development.ohio.gov</p>
--	--	--	--	--	---

Countdown to Census 2020 **BE COUNTED** **Ohio**
It's easy, safe and important. Census2020.gov

Ohio Development Services Agency
