

Identifying and Overcoming Barriers to Disability Inclusion

BETH GLAS & MARA LAYNE

MAXIMUM ACCESSIBLE HOUSING OF OHIO

JANUARY 27, 2021



Housing



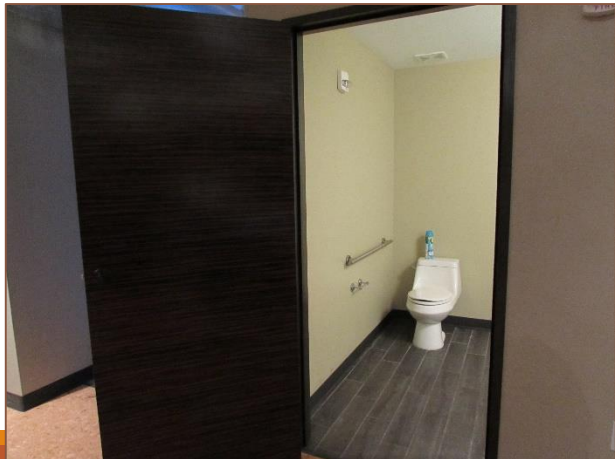
ADA unit



Fully accessible unit



ADA unit



Fully accessible unit



ADA unit



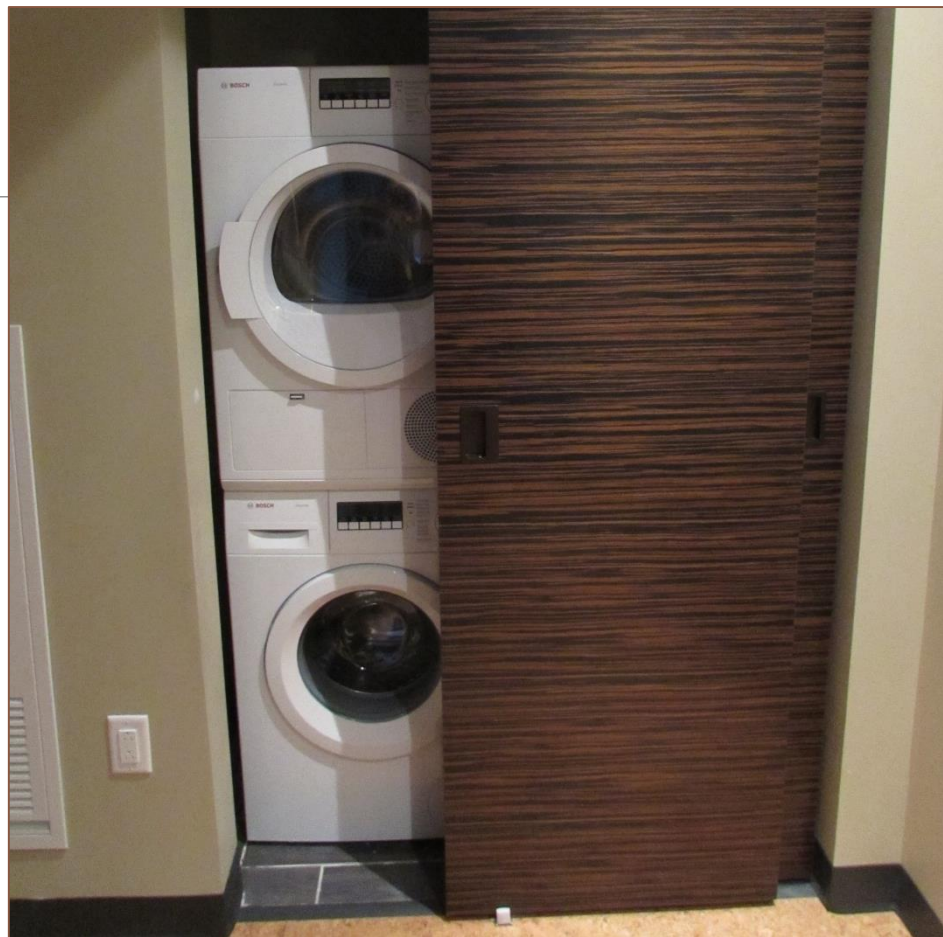
Fully accessible unit



ADA unit



Fully accessible unit



ADA unit



Fully accessible unit

What can we do?

Survey your residents and property managers

Commit to going beyond regulations to achieve inclusion, equity, usability

Work with planning and design commissions to establish guidelines

Communicate expectations to developers, architects, designers, property owners

Include people with disabilities and seniors in planning

Market accessible units and features to the people who need them

Community



Inaccessible entrance



Accessible entrance



Inaccessible sidewalk



Accessible sidewalk



ADA-compliant design



ADA-compliant and inclusive design



Oh dear.



Better!



ADA-compliant design



ADA-compliant and inclusive design

What can we do?

Do walking tours in your community with an eye to inclusion, equity, usability

Identify physical barriers and prioritize resolution

Check AARP's Livability Index

Commit to going beyond regulations to achieve inclusion, equity, usability

Work with planning and design commissions to establish guidelines

Communicate expectations with businesses, developers, designers

Include people with disabilities in planning



How?

Resources

Independent Living Centers

Area Agencies on Aging

Senior Centers

Other nonprofits and agencies serving people with disabilities and seniors

Maximum Accessible Housing of Ohio

Questions & discussion
